

# Multilight® Seamless Glazing Systems by Rainbow Skylight SA

Superior light transmission for Cutting-edge Elegance

Babylonstoren - Stellenbosch

## The Architecture of Light

*The sun: the best natural source of light and energy. Multilight® harnesses this inexhaustible source, providing exceptional quality of light*

Multilight's glazing material features Microcell panels which offer customers the best combination of translucency and strength, transmitting an even diffusion of natural light, with superior durability and impact resistance.

### The optimal solar and thermal balance

Multilight® provides exceptional quality of light. Its rich non-industrial visual appeal delivers thermal insulation and UV protection.

By filtering the amount of light – depending on the different daytime hours – Multilight® contributes to optimal efficiency and significant savings in energy costs.



Silverstar Casino – Krugersdorp



27 Commerce Crescent - Kramerville inside view



Banoscene - JHB

# Multilight® Seamless Glazing Systems by Rainbow Skylight SA



Discovery Health - Sandton



Centurion Mall



27 Commerce Crescent - Kramerville outside view

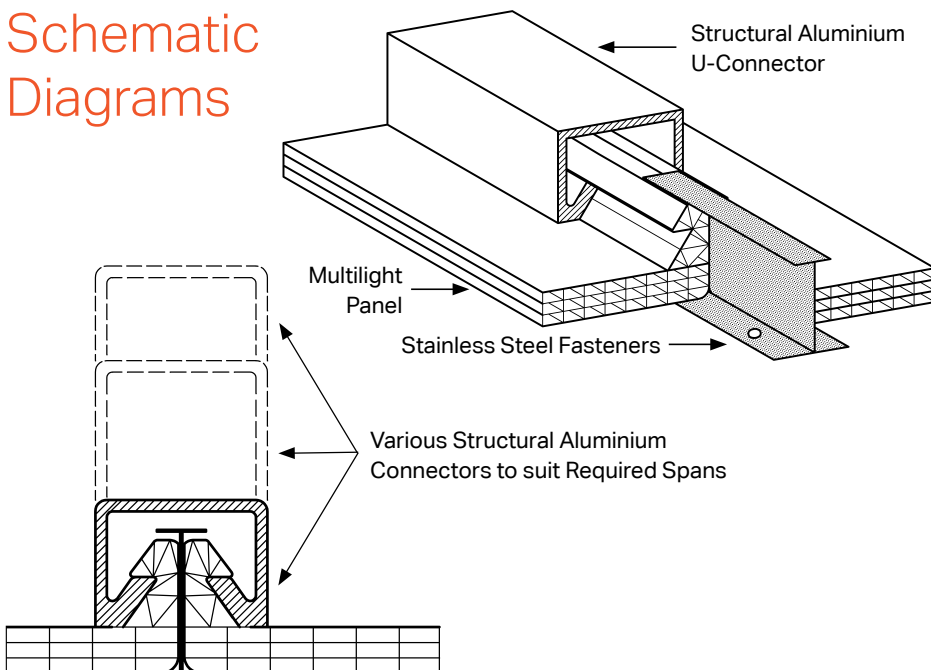


Fossil Park - Western Cape

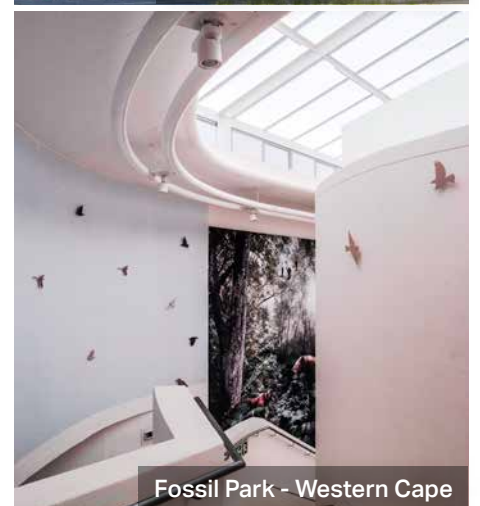
## System benefits

- 100% leakproof
- Free thermal movement
- Easy installation
- Superior impact resistance
- Exceptional thermal insulation
- Quality diffused daylight
- Cold bending of panels on site
- Reduced substructure
- Environmentally friendly product

## Schematic Diagrams



Kanana Hall - Rustenburg



Fossil Park - Western Cape



Total Elspark



Wits Science Stadium – JHB



Paragon Architects Offices



Kyalami Corner - Kyalami



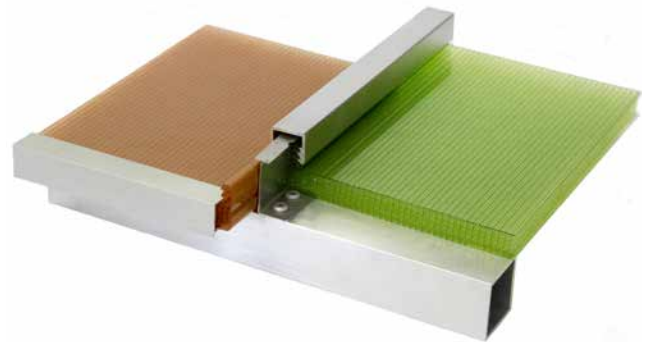
Builders Warehouse Zambezi

## Vertical Application



Connector fitted inside – smooth side out.

## Skylight Application



Connector fitted outside – smooth side in.

### Multilight® Technical Information

	8mm	10mm	12mm	16mm	18mm	22mm	30mm	35mm	
U-Value W/(m <sup>2</sup> *k)	2.24	2.10	2.40	1.90	1.50	1.50	1.40	1.22	
Number of cavities	3	3	4	5	6	5	5	6	
Structure	Multicell	Multicell	Multicell	Multicell	Multicell	Multicell	Honeycomb	Multicell	
Width (mm)	600	600	600 900	600 900 1040	1000	600 900	900	900	
Minimum radius for cold bending	2.0m	2.4m	2.8m	3.0m	3.0m	3.5m	4m	4.4m	
Span between support	From 1.5m to 3.0m dependant on sheet width and connector used								
Reaction to fire	B-s1,d0							N/A	
Minimum slope	5°								
Manufactured according to certification	ISO 9001, ISO 14001								
Ten-year warranty	Yes							N/A	

\*The values are subject to change over time as systems and manufacturing processes evolve.

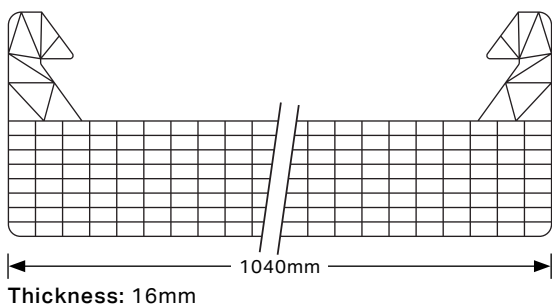
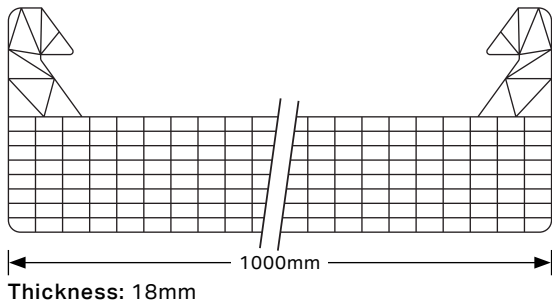
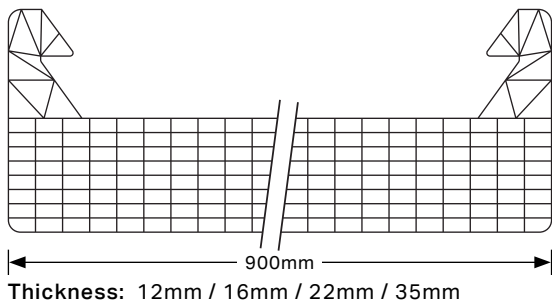
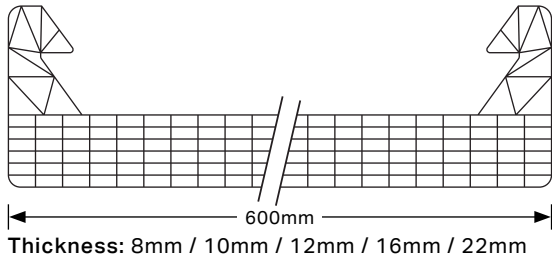


Upper Grayston Offices – Sandton



Gautrain – OR Tamboer

## Schematic Panel Diagrams



## \*Multilight® Optical and Thermal properties

Colour **	10mm	12mm	16mm	18mm	22mm	30mm / 35mm	
Clear	LT%	65	71	63	50	63	On Request
	SHGC	0.63	0.61	0.53	0.54	0.53	
Clear Softlite ***	LT%	64	64	53	49	53	On Request
	SHGC	0.63	0.62	0.53	0.54	0.53	
Clear Low E Lilac ***	LT%	46	46	35	Not Available	35	On Request
	SHGC	0.35	0.35	0.31		0.31	
Clear Low E Bluish Breeze ***	LT%	34	Not Available	Not Available	34	Not Available	Not Available
	SHGC	0.32			0.33		
Reflective Grey	LT%	20	20	20	15	20	On Request
	SHGC	0.30	0.28	0.28	0.25	0.28	
Reflective Ice	LT%	20	24	20	15	20	On Request
	SHGC	0.28	0.38	0.39	0.23	0.39	
Bronze	LT%	25	25	35	20	35	On Request
	SHGC	0.40	0.37	0.42	0.35	0.42	
Grey	LT%	30	30	31	24	31	On Request
	SHGC	0.45	0.44	0.44	0.44	0.44	

LT - % of visible light transmission  
 SHGC - Solar Heat Gain Coefficient  
 - Total solar energy transmitted through the panel

\* Figures are indicative within the manufacturers production tolerances.

\*\* Multilight is available in a full spectrum of colours including those listed above. Properties available on request.

\*\*\* Softlite, Low E Lilac and Bluish Breeze are co-extruded coatings that can be applied to all colours.

### Rainbow Skylight S.A. (Pty) Ltd.

14 Staal Street, Kya Sand, Randburg  
 P.O. Box 1291 Northriding 2162



TEL: +27 11 462 4448/9 FAX: +27 11 462 4431

EMAIL: info@rainbows skylight.co.za

WEB: www.rainbows skylight.co.za